

Gate 40: A Glimpse into the Quabbin Valley Chronicles

Nestled amidst the scenic rolling hills of central Massachusetts, Gate 40 stands as a poignant sentinel to the rich history of the Quabbin Valley. Once a bustling community, this valley was transformed into a reservoir to supply the growing city of Boston with pristine water. Gate 40, a remnant of the valley's past, offers a glimpse into the chronicles of a bygone era.



The Road to Dana: Gate 40 (The Quabbin Valley Chronicles Book 1)

★★★★★ 5 out of 5

Language : English
File size : 3118 KB
Text-to-Speech : Enabled
Screen Reader : Supported
Enhanced typesetting : Enabled
Word Wise : Enabled
Print length : 16 pages
Lending : Enabled



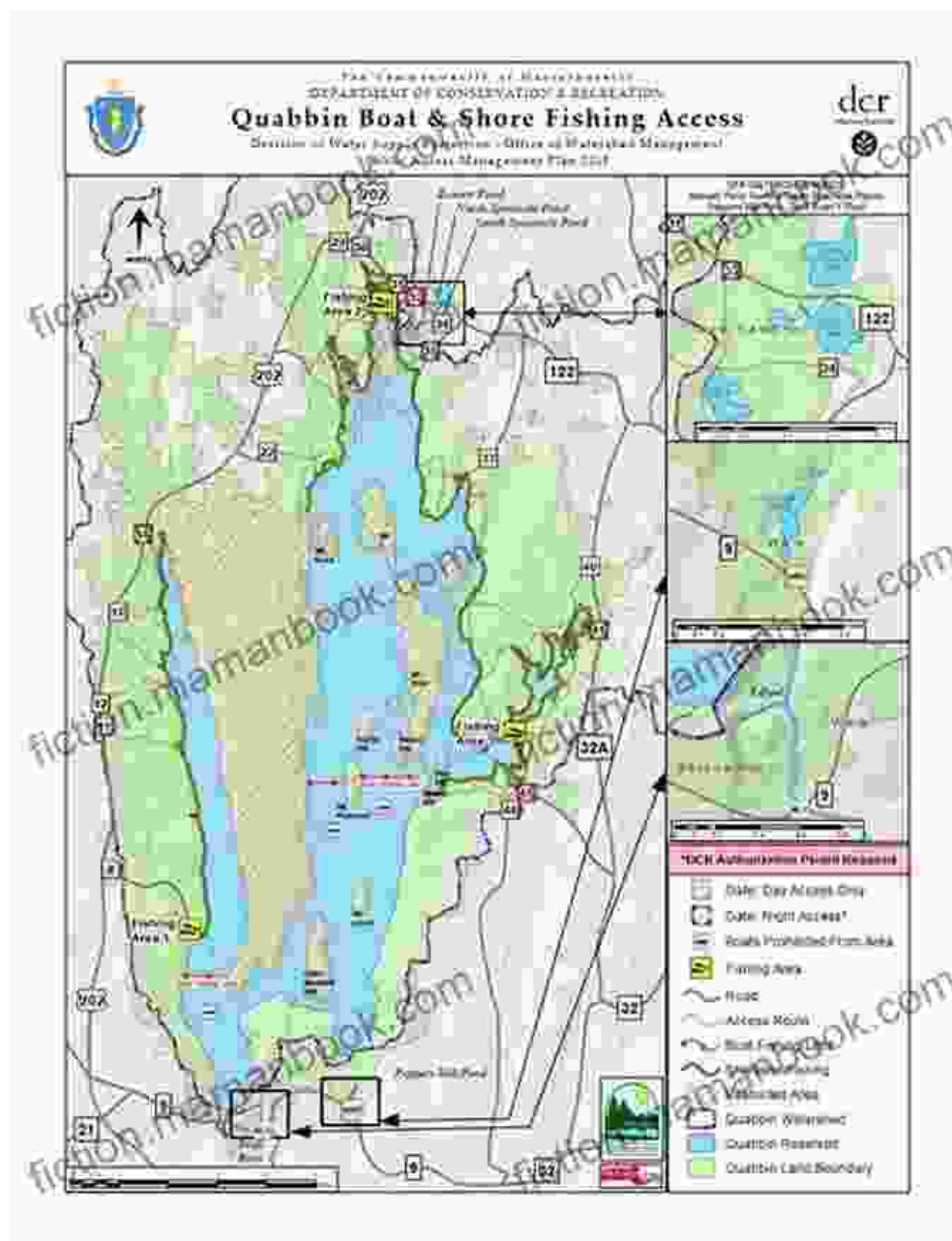
The Swift River Valley: A Thriving Landscape

Before the construction of the Quabbin Reservoir, the Swift River Valley was a thriving agricultural region. The rich soil and ample water resources supported a diverse community of farmers, millers, and merchants. Towns dotted the landscape, including the villages of Dana, Greenwich, and Enfield.



The Need for a Reservoir

In the early 20th century, Boston's growing population and industrial development strained the city's water supply. The search for a new source led to the Swift River Valley, with its abundant water resources. In 1928, the Massachusetts Legislature authorized the creation of the Quabbin Reservoir, which would require the displacement of over 2,000 people and the abandonment of four towns.



The Quabbin Reservoir provides a vital water supply for the city of Boston.

The Evacuation of the Valley

The evacuation of the Swift River Valley was a complex and emotional process. Residents faced the difficult decision of leaving their homes and

communities. The government provided compensation, but it could not fully replace the loss of their way of life.



Gate 40: A Symbol of Transition

Gate 40, located on the eastern edge of the reservoir, marked the boundary between the abandoned Swift River Valley and the protected watershed. It was one of several access points used by construction workers during the reservoir's construction and later by maintenance crews.



Gate 40 stands as a symbol of the transition from a thriving valley to a protected watershed.

Rediscovering the Valley's History

After the reservoir was completed, the Swift River Valley became a protected area, closed to public access. However, in recent decades, there has been a growing interest in the valley's history. Visitors can now explore Gate 40 and other sites, including abandoned cemeteries, cellar holes, and remnants of the old towns.



Preserving the Legacy

Today, Gate 40 serves as a reminder of the transformative power of history. It is a place where visitors can reflect on the sacrifices made to create the Quabbin Reservoir and appreciate the importance of preserving our natural resources.

Efforts are underway to preserve the Swift River Valley's legacy. The Quabbin Reservoir Historical Society maintains a museum and offers guided tours of the area. Conservation organizations are working to protect the forest and wildlife that now inhabit the watershed.



The Quabbin Reservoir stands as a testament to the balance between human needs and environmental conservation.

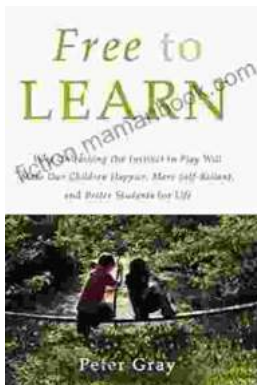
Gate 40 is a poignant symbol of the Quabbin Valley Chronicles, a story of transformation and preservation. It offers a glimpse into a bygone era, a time when a thriving community was sacrificed for the greater good. Today, the Quabbin Reservoir serves as a vital water source for Boston, while Gate 40 stands as a reminder of the valley's rich history and the importance of preserving our natural and cultural heritage.



The Road to Dana: Gate 40 (The Quabbin Valley Chronicles Book 1)

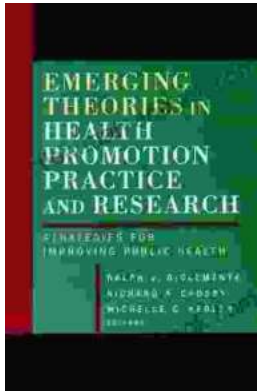
★★★★★ 5 out of 5

Language : English
File size : 3118 KB
Text-to-Speech : Enabled
Screen Reader : Supported
Enhanced typesetting : Enabled
Word Wise : Enabled
Print length : 16 pages
Lending : Enabled



Why Unleashing the Instinct to Play Will Make Our Children Happier, More Self-Reliant, and More Successful in Life

Play is an essential part of childhood. It is how children learn about the world around them, develop their creativity and imagination, and build social skills. However, in...



Theory in Health Promotion Research and Practice

Theory is essential to health promotion research and practice. It provides a framework for understanding the causes of health behavior, and it guides...